

Your Options for Kindergarten & 1st Grade

January 2018



Content from this presentation is the property of Montessori School of Fort Myers and may be used by the public however we ask that credit please be given to our organization.



Your Options

1. Public School
2. Charter School
3. Other Private Schools
4. Home School
5. Stay at Our School (Kindergarten only, 1st graders have to go 😞)



Lee County Public Schools Overview

2016 - 2017 DISTRICT PROFILE

NUMBER OF SCHOOLS

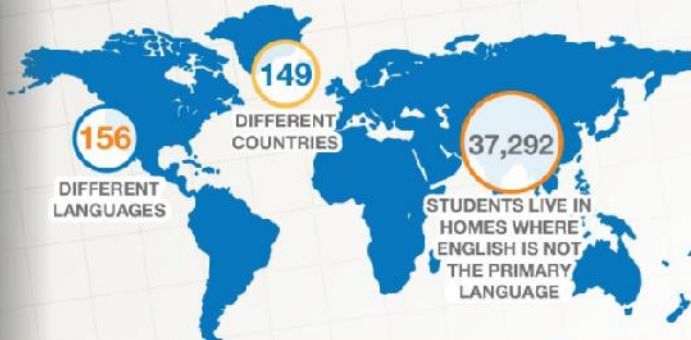


2016-2017 ENROLLMENT BY GRADE LEVEL (including Charter Schools)*

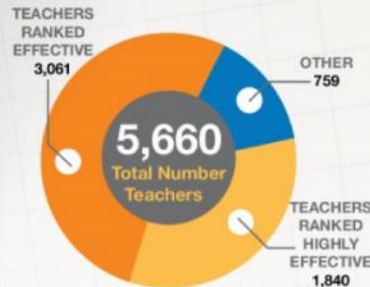


*As of 9/13/2016

STUDENT PRIMARY LANGUAGES



TEACHER CREDENTIALS



SIX-YEAR K-12 ENROLLMENT (including Charter Schools)*

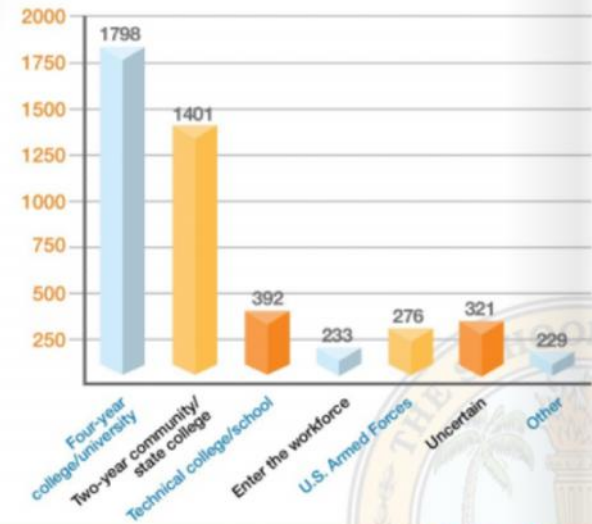


STUDENT RACIAL DIVERSITY*



2016 GRADUATING CLASS

The latest figures (from December 2016) place our graduation rate at 77.8%. This figure increases to 88.2% when looking only at our 13 "traditional" high schools and excluding Charter Schools or Special Centers. Along with scholarship dollars earned, members of the Class of 2016 reported their post high school plans.



Public & Charter Schools



- Florida is much more transparent about the performance of its public schools than other states.
- All Florida school districts earn a “district grade”, in 2017 Lee County Public Schools earned a “B”.



2016-17 District Grades

District Number	District Name	English Language Arts Achievement	English Language Arts Learning Gains	English Language Arts Learning Gains of the Lowest 25%	Mathematics Achievement	Mathematics Learning Gains	Mathematics Learning Gains of the Lowest 25%	Science Achievement	Social Studies Achievement	Middle School Acceleration	Graduation Rate 2015-16	College and Career Acceleration 2015-16	Total Points Earned	Total Components Points	Percent of Total Possible	Percent Tested	Grade 2017	Grade 2016	Informational Baseline Grade 2015	Grade 2014	Grade 2013	Grade 2012	Grade 2011	Grade 2010
28	HIGHLANDS	47	50	40	51	49	40	44	59	70	68	43	561	11	51	99	C	C	C	C	C	C	B	C
29	HILLSBOROUGH	53	54	42	55	56	42	54	72	84	79	49	640	11	58	98	B	B	A	B	C	B	B	A
30	HOLMES	49	51	38	45	47	36	47	69	57	72	43	554	11	50	98	C	C	C	C	C	C	B	B
31	INDIAN RIVER	52	50	40	53	54	43	53	70	58	87	63	623	11	57	98	B	B	A	C	C	B	A	A
32	JACKSON	56	54	47	57	54	43	55	63	44	73	49	595	11	54	99	B	C	B	C	C	B	B	B
33	JEFFERSON	29	30	36	22	31	35	33	26		70	46	358	10	36	98	D	D	D	F	F	D	C	D
34	LAFAYETTE	51	49	36	62	59	47	60	72	59	93	69	657	11	60	99	B	B	B	B	C	B	B	B
35	LAKE	52	51	43	55	53	42	53	71	65	78	46	609	11	55	98	B	C	B	C	C	B	B	B
36	LEE	54	52	42	55	53	43	52	65	70	78	59	623	11	57	98	B	B	B	B	C	B	A	A
37	LECN	59	54	42	61	56	39	59	76	70	92	52	660	11	60	99	B	B	A	B	C	B	A	A
38	LEVY	42	47	42	50	49	42	47	72	35	81	49	556	11	51	97	C	C	B	C	C	B	B	B
39	LIBERTY	46	47	38	45	42	37	45	73	78	75	81	607	11	55	97	B	B	B	B	C	B	A	B
40	MADISON	40	46	38	40	36	31	35	67	76	80	44	533	11	48	99	C	C	C	F	F	D	D	D
41	MANATEE	51	52	42	56	56	45	52	67	51	83	58	613	11	56	98	B	C	B	C	C	C	B	B
42	MARION	47	51	42	48	51	40	52	69	52	82	47	581	11	53	98	C	C	B	C	C	C	B	B
43	MARTIN	60	57	45	66	66	54	60	74	56	89	63	690	11	63	99	A	B	A	B	B	A	A	A
44	MONROE	61	57	47	63	60	49	66	80	64	78	45	670	11	61	99	R	R	A	R	R	A	A	A
45	NASSAU	66	58	46	69	57	47	69	76	50	91	66	695	11	63	99	A	B	A	A	A	A	A	A
46	OKALOOSA	64	58	48	72	63	52	69	81	63	84	70	724	11	66	98	A	A	A	A	B	A	A	A



Public & Charter Schools

- All Florida public and charter schools compete to earn a “performance grade” each year: <http://www.leeschools.net/school-performance-grades-by-school>
- You can use this public data as a starting point in your research.
- Once you have narrowed in on your top 3 schools read there entire report card which has much more information: <http://www.leeschools.net/school-report-cards>
- The grading system changed in 2015-2016, so many school’s grades dropped, the least amount of “A” schools ever. So, don’t exclude a school just because it has one year of a bad grade. E.g. Edison Park Elementary earned a C.

Number Of Schools By Grade Earned


	2006	2007	2008	2009	2010	2011	2012	2013	2014	2015	2016
A	38	40	47	60	54	60	45	36	36	32	15
B	23	18	27	11	22	21	29	20	27	26	29
C	15	18	10	14	12	7	12	25	18	27	41
D	1	4	1	3	0	1	5	8	8	8	7
F	0	0	0	0	0	1	1	3	5	3	3



Lee County Public Schools



Lee County Public Schools are Ranked Here: <http://www.leeschools.net/school-performance-grades-by-school>

 THE SCHOOL DISTRICT OF LEE COUNTY										
School Board Careers Student Assignment Schools MENU										
SCHOOL PERFORMANCE GRADES BY SCHOOL										
Home / Parent Info / School Performance Grades / School Performance Grades by School									Share	
Elementary (K-5)										
School	2009	2010	2011	2012	2013	2014	2015	2016	2017	
Allen Park Elementary	A	A	A	A	A	A	A	B	B	
Alva Elementary	B	C	A	B	B	#	#	#	#	
Bayshore Elementary	A	A	A	B	A	A	B	C	A	
Bonita Springs Elementary	C	B	B	C	C	D	C	A	A	
Caloosa Elementary	A	A	A	A	A	A	B	C	A	
Cape Elementary	A	A	A	A	A	B	A	B	C	
Colonial Elementary	A	C	B	C	D	F	F	B	B	
Diplomat Elementary	A	A	A	A	A	A	A	A	A	
Dr. Carrie D. Robinson Littleton Elementary	B	C	A	B	C	B	D	D	C	
Edgewood Academy	A	C	C	C	C	D	C	C	C	
Edison Park Creative and Expressive Arts	A	B	B	A	B	C	B	C	C	



Public School

2017 Public Elementary Schools receiving and “A” or “B”.

- This list does not include “combination schools” with middle school.

School	2009	2010	2011	2012	2013	2014	2015	2016	2017
Bayshore Elementary	A	A	A	B	A	A	B	C	A
Bonita Springs Elementary	C	B	B	C	C	D	C	A	A
Caloosa Elementary	A	A	A	A	A	A	B	C	A
Diplomat Elementary	A	A	A	A	A	A	A	A	A
Fort Myers Beach Elementary	A	A	B	C	A	B	A	A	A
Gulf Elementary	A	A	A	A	A	B	A	B	A
Heights Elementary	A	A	A	B	B	B	A	B	A
Pine Island Elementary	A	A	A	A	A	A	A	A	A
Pinewoods Elementary	A	A	A	A	A	B	A	B	A
Rayma C. Page Elementary	A	A	A	A	A	A	A	A	A
Three Oaks Elementary	A	A	A	A	A	A	A	A	A
Trafalgar Elementary	A	A	A	A	A	A	A	A	A
Allen Park Elementary	A	A	A	A	A	A	A	B	B
Colonial Elementary	A	C	B	C	D	F	F	B	B
Gateway Elementary	A	B	A	B	A	B	B	C	B
Hector A. Cafferata Jr. Elementary	A	A	A	A	B	B	C	C	B
James Stephens International Academy	#	#	#	#	#	#	#	#	B
Orangewood Elementary	A	A	A	A	B	B	B	B	B
Patriot Elementary	A	A	A	B	C	A	C	C	B
Pelican Elementary	A	A	A	B	B	B	B	B	B
Skyline Elementary	A	A	A	B	C	A	B	B	B
Treeline Elementary	A	C	A	B	C	A	C	B	B



Charter Schools

- 2017 Charter Elementary Schools. Note that several have closed or been taken over by new management and renamed (E.g. Fort Myers Preparatory & Fitness Academy)
- In my opinion, there is no conclusive evidence that charters perform better or worse than public schools. They are both free and thus the same families have access to both public schools and charter schools and so the outcome is largely the same.

Lee County Charter School
Elementary 2017

School	2009	2010	2011	2012	2013	2014	2015	2016	2017
Bonita Springs Charter	A	A	A	A	B	C	A	B	A
Christa McAulliffe Charter Elementary	A	A	A	B	B	A	A	A	A
The Island School	NA	NA	NA	NA	NA	NA	B	I	A
Oasis Charter Elementary	A	A	A	A	A	A	A	B	B
Six Mile Charter Academy	A	B	B	A	B	B	C	C	B
Cape Coral Charter	C	A	B	B	C	B	B	C	C
Gateway Charter Elementary	A	A	A	A	B	C	B	B	C
Unity Charter School of Cape Coral	#	#	#	#	#	#	#	#	C
Oak Creek Creek Charter School of Bonita Springs	NA	NA	A	B	C	B	C	C	D
Pivot Charter	NA	NA	NA	NA	I	I	F	I	D
Unity Charter School of Fort Myers	#	#	#	#	#	#	#	#	D
Bonita Springs Preparatory & Fitness Academy	NA	NA	A	B	C	B	C	C	NA
Cape Coral Preparatory & Fitness Academy	NA	NA	NA	NA	D	C	C	B	NA
Fort Myers Preparatory & Fitness Academy	NA	NA	A	B	C	D	F	D	NA
Lee Charter Academy	A	A	F	I	F	NA	NA	NA	NA



Public & Charter Elementary Schools



Lee County charter and public elementary schools, the darker the marker, the higher the grade. You may want to start here by looking for high ranked schools near both (1) your home and (2) your place of work.

Lee School Rankings 2017
7 views

All changes saved in Drive

Add layer Share Preview

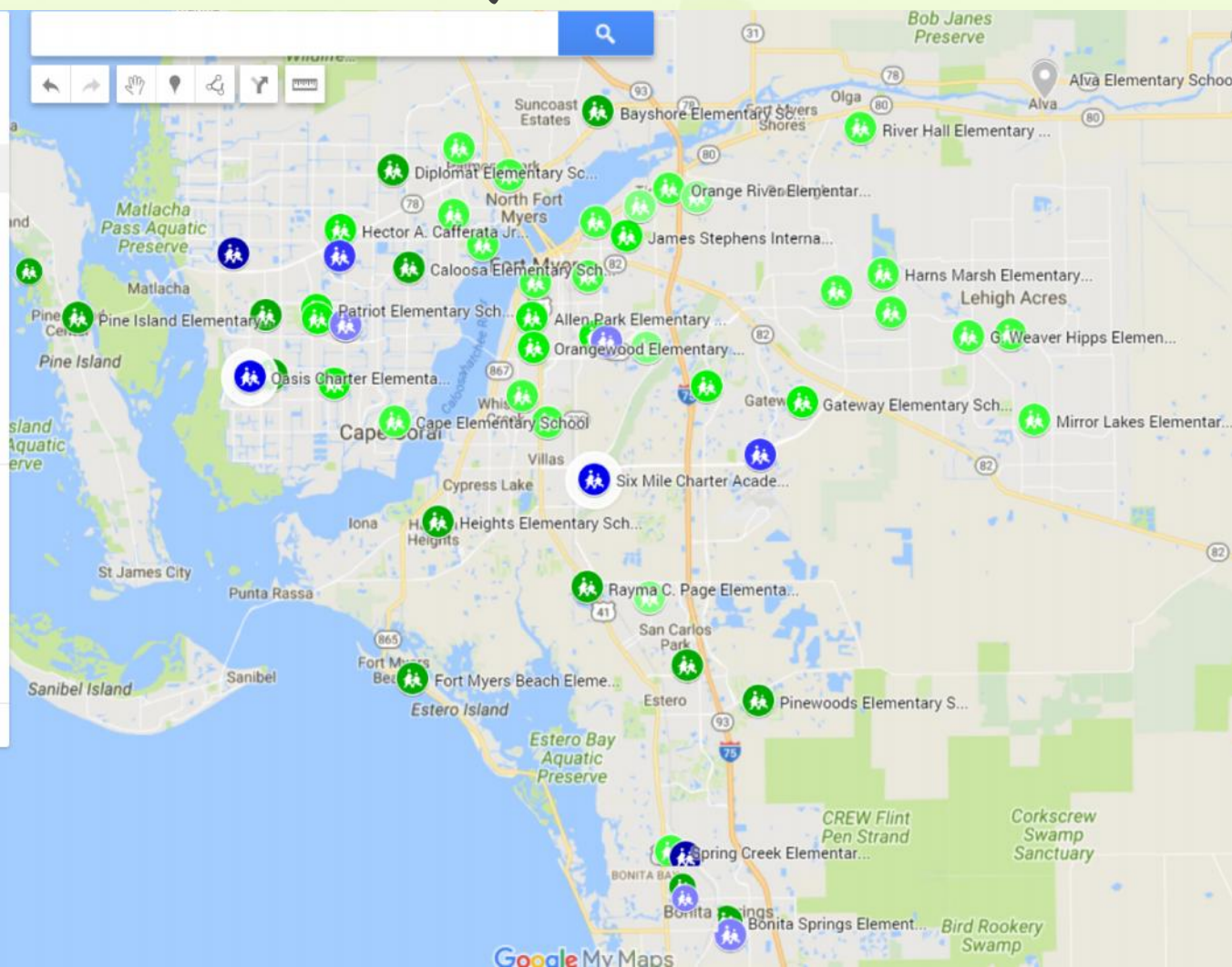
Public Elementary Schools
Stylled by Maps Ranking

- D School (4)
- C School (19)
- B School (10)
- A School (12)
- No value (1)

Charter Elementary Schools
Stylled by Google Maps Ranking

- D School (3)
- C School (3)
- B School (2)
- A School (3)

Base map



Public & Charter Schools

So, how do I get started selecting my top choices for a public or charter school?

1. Identify 3-5 schools you are interested in based on the map on the previous page.
2. Read online reviews. Google.com, Facebook.com, Greatschools.org, and more.
3. Ask friends about their experience. Our parents directory show which families have older children which may be in public or charter elementary schools.
4. Ask for a tour. Many schools will give tours on certain days. Do it now while children are in session. Do your research in advance (you read their latest report card before you visited, right? <http://www.leeschools.net/school-report-cards>) and write down your questions.
5. You will have little control over which teacher you get assigned (there may be 7 different kindergarten classes) but you can ask about length of tenure of the kindergarten lead teachers and administrative team.
6. Look on www.leeschools.net and learn about the elementary schools with special programs, e.g.
 - Creative arts program at Edison Park Elementary
 - Math and Science program at Allen Park
 - International Baccalaureate at Heights Elementary
 - More...



Public & Charter Schools

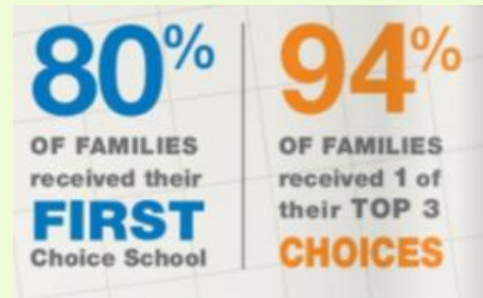
Ok, I know my top three choices, now what?

1. Lee County Public Schools assigns children via the “School choice” lottery system.
2. You must apply in person (for your first year only, the following years you can do it online) at a Student Assignment Office January 22, 2018 – March 23, 2018.
 1. Visit here to find you nearest student assignment office location: <http://www.leeschools.net/student-assignment>
 2. Your application will be processed the same regardless of when you submit the application during the open enrollment period. However, if you miss the March 23, 2018 deadline, this will limit your chances of getting your top choice.
3. The Lottery process.
 1. Begins once the open enrollment period ends, each application is assigned a random number that determines the order in which the application will be processed.
 2. Applications are then sorted, giving priority to 1) Students in full-time special education classes; 2) Siblings wanting to attend the same school; and 3) Students living within proximity areas of each school.
 3. School assignments are mailed home in late April.
 4. Students who receive an assignment other than their first choice are placed on a waiting list for the first 15 days of school. Student Assignment personnel will notify parents if a seat opens during this window. When participating in the first application period, more than 95% of families ultimately receive one of their top three choices, and many pass on a seat that becomes available to them during the 15 day window because they are happy with their assigned school.



Public & Charter Schools

1. Is it true that my child will have a worse chance of getting into their 1st choice school if I stay at MSFM for Kindergarten and then apply to public school for first grade?
 1. I haven't heard conflicting information from both former parents and district personnel. I don't have a definitive answer.
2. Will my child's kindergarten year credits from MSFM transfer to the public and other private schools for kindergarten.
 1. 100% Yes. We are triple accredited and our certificate of completion of kindergarten is accepted everywhere.
3. School Choice Lottery Tips
 1. Don't freak out if you don't get your first choice. I have heard from families of children as far down as 50th in line getting into their first choice school a few weeks into the start of the school year.
 2. Go visit the school that you want in person and introduce yourself to the administration. Be polite and kind. Local administrators do have some control over who gets in their school especially when wait lists are involved and there is a lot of shuffling around the first few weeks of school. All things equal, administrators want actively involved parents who often have better-behaved children who succeed academically.

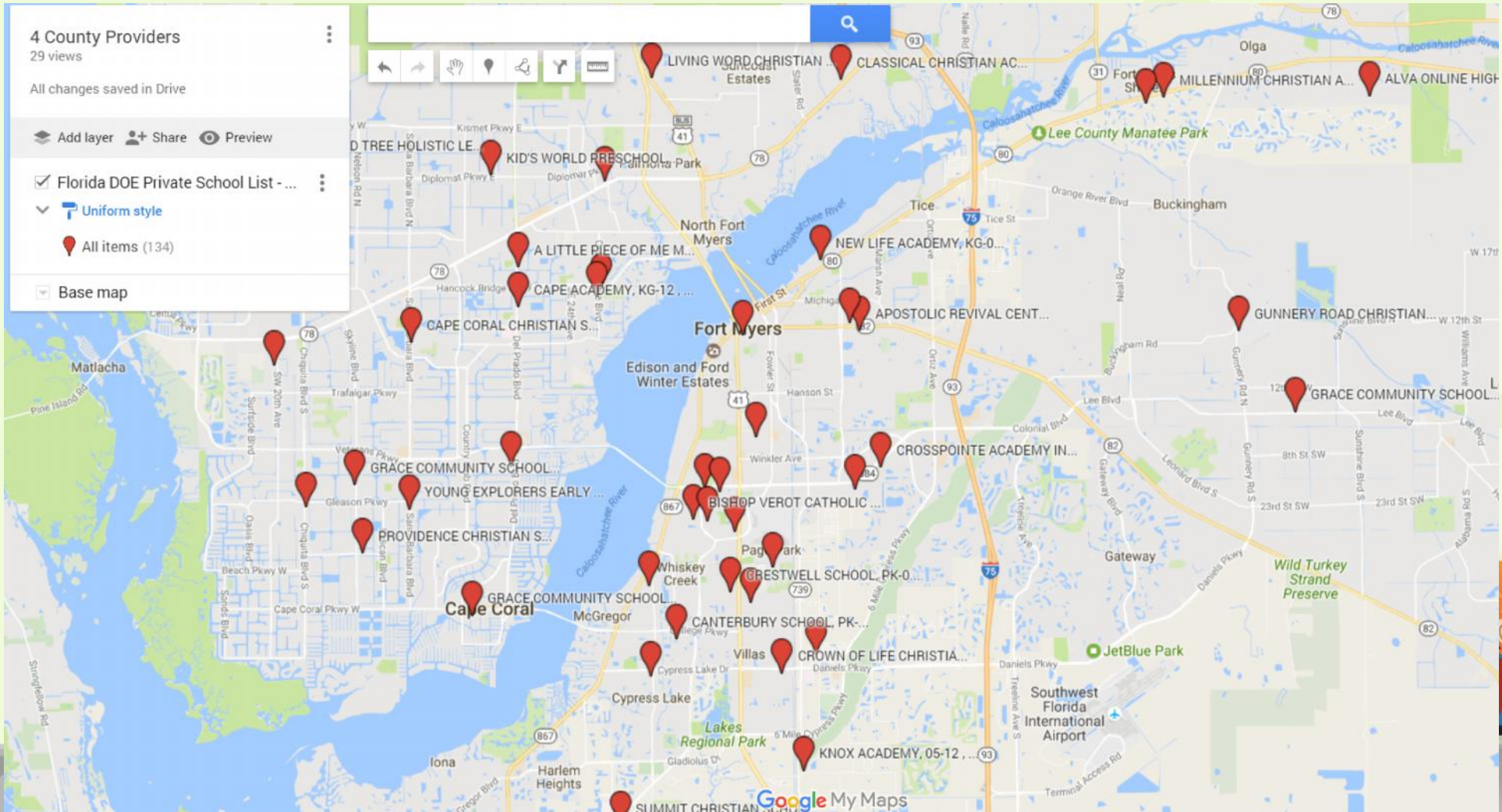


Other Private Schools

- The single best indicator of quality is accreditation. Many private schools are not accredited. Any accreditation will do, but some are better than others. Generally speaking, the religious schools accreditation groups have the lowest standards, while the secular national-level (NCPSA) and regional-level (SACS-CASI/AdvancedEd) have the highest accreditation standards.
- So, start by looking at other accredited schools.
- Second most important is speaking with current parents at the school.



Other Private Schools



Other Private Schools



School Name	Mc Kay	FTC	Gard Iner	Relig ious	Denomination	Grade Levels	Pre- K	Kinder garten	Total Enrollment	Accreditation
A LITTLE PIECE OF ME MONTESSORI ACADEMY	Yes	Yes	Yes	No		PK-08	9	3	34	
ALVA ONLINE HIGH SCHOOL	No	No	No	No		KG-12	0	0	2	
APOSTOLIC REVIVAL CENTER CHRISTIAN SCHOOL	Yes	Yes	No	No		PK-06	2	8	22	
BISHOP VEROT CATHOLIC HIGH SCHOOL	Yes	Yes	Yes	Yes	CATHOLIC	09-12	0	0	666	SACS/CASI
CANTERBURY SCHOOL	No	No	No	No		PK-12	37	24	632	FCIS, SACS/CASI
CAPE ACADEMY	Yes	Yes	Yes	No		03-12	0	0	62	NIPSA
CAPE CORAL CHRISTIAN SCHOOL INC.	Yes	Yes	Yes	Yes	NON-DENOMINATIONAL	KG-12	0	5	102	
CLASSICAL CHRISTIAN ACADEMY INC.	No	No	No	Yes	NON-DENOMINATIONAL	KG-12	0	4	145	FCCPSA, SACS/CASI
CRESTWELL SCHOOL	Yes	Yes	No	No		PK-08	19	18	191	AISEF, SACS/CASI
CROSSPOINTE ACADEMY INC.	No	No	No	Yes	NON-DENOMINATIONAL	KG-12	0	2	21	FCCPSA
CROWN OF LIFE CHRISTIAN ACADEMY	Yes	Yes	Yes	Yes	LUTHERAN	PK-04	39	8	59	
DE LASALLE ACADEMY OF FORT MYERS	Yes	Yes	Yes	No		01-12	0	0	136	
DISCOVERY DAY ACADEMY	Yes	Yes	Yes	No		PK-06	65	24	163	SACS/CASI
EBENEZER CHRISTIAN ACADEMY 3	No	No	No	Yes	NON-DENOMINATIONAL	PK-12	1	5	32	
EVANGELICAL CHRISTIAN	Yes	Yes	Yes	Yes	NON-DENOMINATIONAL	PK-12	246	56	1007	FACCS
FORT MYERS CHRISTIAN SCHOOL	Yes	Yes	No	Yes	ASSEMBLIES OF GOD	PK-08	32	16	162	FCIS
GOOD SHEPHERD LUTHERAN SCHOOL	Yes	Yes	Yes	Yes	LUTHERAN	PK-10	70	16	183	FLGA-LCMS
GRACE CLASSICAL ACADEMY	Yes	Yes	No	Yes	NON-DENOMINATIONAL	KG-08	0	4	32	
GRACE COMMUNITY SCHOOL	No	No	No	Yes	NON-DENOMINATIONAL	PK-01	20	6	32	
GUNNERY ROAD CHRISTIAN ACADEMY	Yes	Yes	No	Yes	BAPTIST	PK-12	40	19	150	
HIBERNIAN PRIVATE SCHOOL	Yes	No	Yes	No		08-12	0	0	22	NIPSA
JCOG CHRISTIAN PREPARATORY ACADEMY	No	No	No	Yes	NON-DENOMINATIONAL	PK-KG	0	0	0	
KID LIFE ACADEMY ELEMENTARY	Yes	Yes	No	Yes	NON-DENOMINATIONAL	KG-08	0	7	30	
KID'S WORLD PRESCHOOL	No	No	No	No		PK-PK	93	0	93	
LIVING WORD CHRISTIAN SCHOOL	Yes	Yes	Yes	No		KG-12	0	4	59	
MAIMONIDES HEBREW DAY SCHOOL	Yes	Yes	Yes	Yes	JEWISH	PK-09	10	3	33	
MILLENNIUM CHRISTIAN ACADEMY	Yes	Yes	Yes	Yes	ASSEMBLIES OF GOD	KG-05	0	3	6	
MONTESSORI SCHOOL OF FT. MYERS	Yes	Yes	Yes	No		PK-KG	60	6	66	
NEW LIFE ACADEMY	Yes	Yes	Yes	Yes	NON-DENOMINATIONAL	PK-12	16	10	77	
NEW TESTAMENT BAPTIST SCHOOL	Yes	Yes	No	Yes	BAPTIST	KG-12	0	4	49	
NICAEA ACADEMY OF CAPE CORAL	Yes	Yes	Yes	Yes	NON-DENOMINATIONAL	PK-12	4	2	27	
PEACE BY PIECE INC	Yes	No	Yes	No		PK-04	10	4	20	
PROVIDENCE CHRISTIAN SCHOOL	Yes	Yes	Yes	Yes	PRESBYTERIAN	PK-05	19	10	67	CSF
RENAISSANCE SCHOOL	Yes	Yes	Yes	No		PK-06	28	1	40	AMS, SACS/CASI
ROCK CHRISTIAN ACADEMY	No	No	No	Yes	PENTECOSTAL	KG-12	0	2	14	
SACRED HEART OF JESUS PRIVATE SCHOOL	No	No	No	Yes	CATHOLIC	01-12	0	0	89	
SAINT ANDREW CATHOLIC	Yes	Yes	Yes	Yes	CATHOLIC	PK-08	37	28	265	FCCAP
SAINT FRANCIS XAVIER	Yes	Yes	No	Yes	CATHOLIC	PK-08	42	46	474	FCCAP
SAINT MICHAEL LUTHERAN SCHOOL	Yes	Yes	No	Yes	LUTHERAN	PK-08	33	24	311	FLGA-LCMS, SACS/C
SONSHINE CHRISTIAN ACADEMY	Yes	Yes	No	Yes	NON-DENOMINATIONAL	PK-12	26	8	241	
SOUTHWEST FLORIDA CHRISTIAN ACADEMY	No	Yes	No	Yes	NON-DENOMINATIONAL	KG-12	0	28	493	ACSI, SACS/CASI
SUMMIT CHRISTIAN SCHOOL	Yes	Yes	Yes	Yes	PRESBYTERIAN	PK-08	39	14	159	CSF
TEMPLE CHRISTIAN SCHOOL	Yes	Yes	No	Yes	BAPTIST	PK-12	30	7	103	FACCS
VIRTUS ACADEMY	Yes	Yes	Yes	No		PK-05	2	2	5	
WILOSTAR3D ACADEMY	No	No	No	No		06-12	0	0	150	SACS/CASI
YOUNG EXPLORERS EARLY LEARNING CENTER	Yes	Yes	No	No		PK-05	39	13	68	

Home School

- There are requirements. Start here:
<http://www.leeschools.net/homeschool>
- There are several meet-up / support groups that meet locally and tons of them online. Lot's of good advice out there.



Staying at Our School for Kindergarten

- Academics
- Happy and confident children
- Scholarships Available – Florida Tax Credit Scholarship
- Kindergarten program overview
- Benefits of being a “third-year” kindergarten student



Staying at Our School for Kindergarten



Academics

- While we don't focus on summative testing (only done once at the end of the year), our standardized test scores from the last two years are outstanding.
- Most common complaint we hear is that students are bored in kindergarten or first grade when they leave.
- We have never received a complaint that a student who left our school was unprepared for the school that they went to next.

Montessori School of Fort Myers

Iowa Test of Basis Skills Scores - Kindergarteners

Class Average Test Scores

	2015-2016		2016-2017	
	Grade Equivalent	National Percentile Rank	Grade Equivalent	National Percentile Rank
Vocabulary	2.5	91%	1.4	88%
Reading: Words	1.0	78%	2.9	99%
Reading: Comprehension	2.9	99%	2.5	99%
Reading Total	1.5	94%	2.6	99%
Word Analysis	1.9	91%	1.3	71%
Listening	1.8	96%	0.8	50%
Language	2.0	98%	1.6	91%
Mathematics	2.0	99%	1.1	88%
Core Total	2.2	97%	1.4	92%

Note: Class averages were taken from all Kindergarteners who took the exam.

Published 6/5/2017

Staying at Our School for Kindergarten

Happy & confident children - Spring 2017 Survey Results

- 96% of our parents believe their child is academically enriched at our school.
- 92% of parents were satisfied with their experience at our school during the 2016-2017 school year.
- 91% of our parents would recommend our school to a friend.
- Do your children seem to be happy and thriving at our school? If so, then why change that?



Staying at Our School for Kindergarten

Kindergarten Program Overview

- 2018-2019 kindergarten enrollment: We have 13 PreK4 students right now, we expect 8-12 to stay for kindergarten and we will likely enroll a few to from outside our school to start for kindergarten in fall 2018.
- Raise your hand if you are tentatively planning on staying for kindergarten?
- 2018-2019 calendar and tuition fees have been posted to the website and full re-enrollment information will be announced soon.
- Fall 2018 Re-enrollment deadline will be late February 2018.



Staying at Our School for Kindergarten

Top Benefits of Staying for the Third Year (Kindergarten)

1. **Love of Learning.** Does your child love school and can't wait to go every day? If so, consider yourself lucky. Why tinker with a winning school situation when so many families are frustrated and disappointed?
2. **Leadership & Role Modeling.** Your child has waited for two years to be one of the five year old leaders of her class. The kindergartners are looked up to as role models for the younger students, and most children eagerly await their opportunity to play this role.
3. **Advanced Curriculum.** While most public kindergarten classrooms will be working on recognizing letters and numbers, our kindergartner read (Bob books, Explode the Code, research books from our library) and write books (little hand-made research project booklets).
4. **No Limits on Advancement.** Montessori classrooms are set up so that your child can continue to progress at her own pace. In traditional kindergarten, she will have to wait while the other children begin to catch up.
5. See handout for many more reasons!



The Kindergarten Program

Cindy and Danielle...



Questions?

